

# HERITAGE STRATEGY

## DRAFT



PREPARED FOR  
**SHIRE OF GNOWANGERUP**  
MAY 2015



stephencarrick  
ARCHITECTS Pty Ltd



**Contents**

**Executive Summary ..... 1**

**1. Introduction ..... 2**

**2. Heritage in the Local Planning Scheme ..... 4**

**3. Shire of Gnowangerup Strategic Community Plan ..... 8**

**4. Local Government Municipal Heritage Inventory ..... 9**

**4.1 List of Places on the Municipal Heritage Inventory .....10**

**5. Heritage Council of WA database.....16**

**6. State Register of Heritage Places.....17**

**7. Heritage Places Owned by the Shire of Gnowangerup .....19**

**8. Heritage Incentives.....20**

**9. Training and Education .....22**

**10. Community Engagement .....23**

**11. Acceptance, Implementation and Review of the Heritage Strategy .....24**

**12. Priorities and Reporting.....26**

**13. Heritage Contacts and Support .....28**

**Appendix One: Glossary .....29**

**Appendix Two: Progress Report template .....31**

Cover Photo – Saint Margaret's Church of England

## Executive Summary

This report was commissioned by the Shire of Gnowangerup to establish the current status of heritage in the Shire and provide a list of objectives and prioritised actions. Producing a heritage strategy was part of the conditions of receiving Heritage Council of WA funding towards a heritage advisory service.

Stephen Carrick of Stephen Carrick Architects worked in collaboration with the Shire of Gnowangerup representative, Community Development Officer, Yvette Wheatcroft to prepare the Heritage Strategy. Stephen Carrick met with Yvette Wheatcroft on Thursday 9th and Friday 10th October 2014 and inspections of places within the Shire were undertaken.

Existing heritage reports and planning documents were considered in relation to best heritage practice, particularly the terms of the *Burra Charter*. Guidelines provided by the Heritage Council of WA for producing heritage strategies were followed to produce the final report.

The report found that whilst some measures to protect heritage have been taken, including provisions in the Local Planning Scheme, more actions can be taken to increase the profile of heritage matters. The Shire has indicated a willingness to examine these measures.

Key recommendations of the report are:

- Clarify the places currently included on the MHI to remove duplication of entries and to ensure all places are within the Shire of Gnowangerup
- Review the Municipal Heritage Inventory
- Produce a Heritage List in accordance with the Local Planning Scheme
- Promote the awareness and profile of heritage places in the community

## 1. Introduction

### Background to Heritage Strategy

Heritage is based on those aspects of our past that we want to recognise, retain and pass on to future generations. It encompasses many things – the way we live, the traditions we hold dear, our history and values. Heritage is also reflected in the natural and cultural diversity of places and objects that help us to understand our past and our effect on the Australian landscape. Heritage places may evoke special meaning for us as individuals or as a member of a community.

Local Governments, including the Shire of Gnowangerup, are responsible for identifying, protecting, promoting and managing the majority of Western Australia's heritage. The *Shire of Gnowangerup Heritage Strategy* has been produced in order to summarise the current management of heritage in the district and provide a direction for the ongoing and future protection, conservation, management and enhancement of heritage within the Shire.

Stephen Carrick Architects has been commissioned to prepare this Heritage Strategy.

### Historical Overview of the Shire

The first European settlement of the area began with sandalwood cutters working the forests and a few isolated pastoralists. A sandalwood cutters camp was in place in the Borden area from the 1840s. Early pastoralists from the 1840s and 1850s were the Cheyne, Hassell and Moir families.

The Albany Road was cleared in the early 1850s, increasing the area's links with the rest of the Colony. In the late 1880s, the railway linking Perth and Albany was constructed, opening in 1889. Farmers slowly began to take up land along the line through the 1890s. Gnowangerup was gazetted in 1908. A branch line from Tambellup reached the new town in 1912, and it grew rapidly. By 1913, over 100 buildings were reported to have been erected.

The second town in the Shire was Ongerup, surveyed in 1910. The railway extended to Ongerup in 1913, resulting in an increase in settlement.

In the interwar years, land in the Gnowangerup region was subdivided into smaller farms for use in the Soldier Settlement Scheme. The Shire's third town, Borden, was gazetted in 1916 but grew in the 1920s as a result of returned soldiers settling in the area.

By the 1970s, around 30% of Gnowangerup's population identified as Noongar, a relatively high proportion for the time. An active Noongar community continues to be part of the town to the present, with almost 10% of the Shire's population being Indigenous people.

Gnowangerup continues to be a farming community. In more recent years its proximity to the Stirling Ranges has also seen it increase its focus on nature-based tourism.

### Acknowledgements

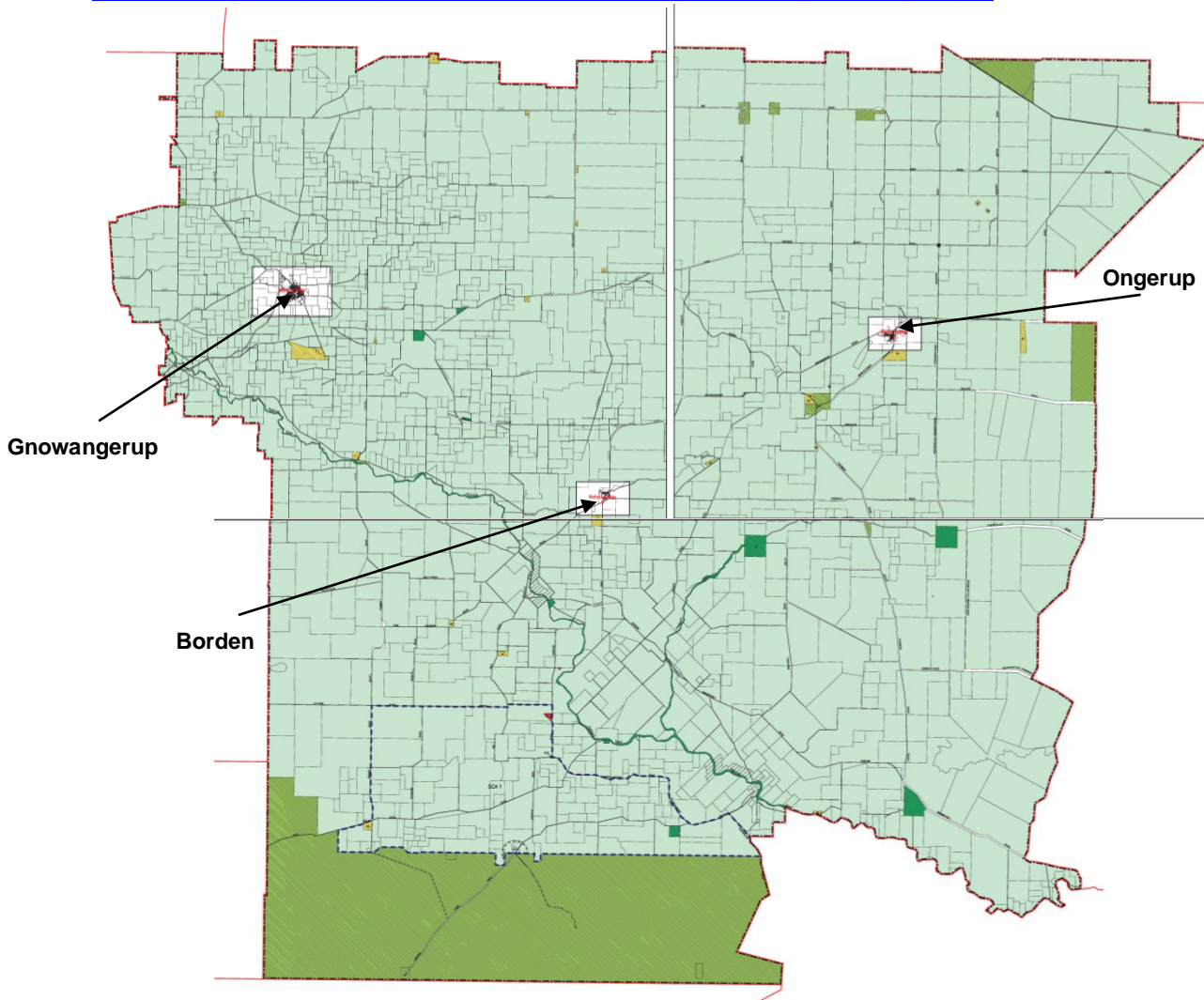
The broad structure and scope of this document is based on the Heritage Strategy prepared for the Shire of Cue by Tanya Henkel in 2013. Ms Henkel kindly provided permission for the use of the base document to Stephen Carrick Architects.

**District Map**



Source: Department of Water

[http://www.drd.wa.gov.au/publications/Documents/LGA\\_boundaries\\_Southern\\_WA.pdf](http://www.drd.wa.gov.au/publications/Documents/LGA_boundaries_Southern_WA.pdf)



Source: Shire of Gnowangerup Local Planning Scheme No.2 Maps 01, 02 & 03

## 2. Heritage in the Local Planning Scheme

The following extract has been taken from the Shire of Gnowangerup's Local Planning Scheme No.2, updated 18 February 2010.

### **PART 7 - HERITAGE PROTECTION**

#### **7.1 HERITAGE LIST**

7.1.1 *The local government is to establish and maintain a Heritage List to identify those places within the Scheme Area which are of cultural heritage significance and worthy of conservation under the provisions of the Scheme, together with a description of each place and the reasons for its entry.*

7.1.2 *In the preparation of the Heritage List the local government is to:*

(a) *have regard to the Municipal Inventory prepared by the local government under section 45 of the Heritage of Western Australia Act 1990; and*

(b) *include on the List such of the entries on the Municipal Inventory as it considers to be appropriate.*

7.1.3 *In considering a proposal to include a place on the Heritage List, the local government is to:*

(a) *notify in writing the owner and occupier of the place and provide them with a copy of the description proposed to be used under clause 7.1.1 and the reasons for the proposed entry;*

(b) *invite submissions on the proposal from the owner and occupier of the place within 21 days of the day the notice is served;*

(c) *carry out such other consultations as it thinks fit; and*

(d) *consider any submissions made and resolve to enter the place on the Heritage List with or without modification or reject the proposal after consideration of the submissions.*

*Note:* 1. A "place" is defined in Schedule 1 and many include works, buildings and contents of buildings.

7.1.4 *Where a place is included on the Heritage List, the local government is to give notice of the inclusion to the Commission, the Heritage Council of Western Australia and to the owner and occupier of the place.*

7.1.5 *The local government is to keep a copy of the Heritage List with the Scheme documents for public inspection.*

7.1.6 *The local government may remove or modify the entry of a place on the Heritage List by following the procedures set out in clause 7.1.3.*

*Note:*

1. *The purpose and intent of the heritage provisions are:*

(a) *to facilitate the conservation of places of heritage value; and*

(b) *to ensure as far as possible that development occurs with due regard to heritage values.*

2. *A "place" is defined in Schedule 1 and may include works, buildings, and contents of buildings.*

#### **7.2 DESIGNATION OF A HERITAGE AREA**

7.2.1 *If, in the opinion of the local government, special planning control is needed to conserve and enhance the cultural heritage significance and character of an area, the local government may, by resolution, declare that area to be a Heritage Area.*

7.2.2 *The local government is to:*

(a) *adopt for each heritage area a Local Planning Policy which is to comprise:*

- (i) a map showing the boundaries of the heritage area;*
- (ii) a record of places of heritage significance; and*
- (iii) objectives and guidelines for the conservation of the Heritage Area;*

*and*

(b) *keep a copy of the Local Planning Policy for any designated Heritage Area with the Scheme documents for public inspection.*

7.2.3 *If a local government proposes to designate a Heritage Area, the local government is to:*

(a) *notify in writing each owner of land affected by the proposed designation and provide the owner with a copy of the proposed Local Planning Policy for the Heritage Area;*

(b) *advertise the proposal by:*

- (i) publishing a notice of the proposed designation once a week for 2 consecutive weeks in a newspaper circulating within the Scheme Area;*
- (ii) erecting a sign giving notice of the proposed designation in a prominent location in the area affected by the designation; and*
- (iii) such other methods as the local government considers necessary to ensure widespread notice of the proposal;*

*and*

(c) *carry out such other consultations as the local government considers appropriate.*

7.2.4 *Notice of a proposal under clause 7.2.3(b) is to specify:*

(a) *the area subject of the proposed designation;*

(b) *where the proposed Local Planning Policy which will apply to the proposed Heritage Area may be inspected; and*

(c) *in what form and during what period (being not less than 21 days from the date the notice is published or the sign is erected, as the case requires) submissions may be made.*

7.2.5 *After the expiry of the period within which submissions may be made, the local government is to:*

(a) *review the proposed designation in the light of any submissions made; and*

(b) *resolve to adopt the designation with or without modifications, or not to proceed with the designation.*

7.2.6 *If the local government resolves to adopt the designation, the local government is to forward a copy of the designation to the Heritage Council of WA, the Commission, and each owner of land affected by the designation.*

7.2.7 *The local government may modify or revoke a designation of a Heritage Area.*

7.2.8 *Clauses 7.2.3 to 7.2.6 apply, with any necessary changes, to the amendment of a designation of a heritage area.*



**7.3 HERITAGE AGREEMENTS**

*The local government may, in accordance with the Heritage of Western Australia Act 1990, enter into a heritage agreement with an owner or occupier of land or a building for the purpose of binding the land or affecting the use of the land or building insofar as the interest of that owner or occupier permits.*

*Note:*

- 1. A heritage agreement may include a covenant intended to run with the land relating to the development or use of the land or any part of the land.*
- 2. Detailed provisions relating to heritage agreements are set out in the Heritage of Western Australia Act 1990.*

**7.4 HERITAGE ASSESSMENT**

*Despite any existing assessment on record, the local government may require a heritage assessment to be carried out prior to the approval of any development proposed in a heritage area or in respect of a heritage place listed on the Heritage List.*

**7.5 VARIATIONS TO SCHEME PROVISIONS FOR A HERITAGE PLACE OR HERITAGE AREA**

*Where desirable to:*

- (a) facilitate the conservation of a heritage place entered in the Register of Places under the Heritage of Western Australia Act 1990 or listed in the Heritage List under clause 7.1.1; or*
- (b) enhance or preserve heritage values in a Heritage Area declared under clause 7.2.1,*

*the local government may vary any site or development requirement specified in the Scheme or the Residential Design Codes, by following the procedures set out in clause 5.5.2.*

At this stage the Shire has not prepared a 'Heritage List' as outlined in section 7.1 nor formally identified its existing Municipal Heritage Inventory (MHI) as its 'Heritage List' for planning purposes, as it has been felt the MHI list is insufficient for this purpose until it has been reviewed.



**Actions:**

- Following a review of the MHI, prepare a Heritage List in accordance with Section 7.1 of the Local Planning Scheme.
- Ensure the Heritage List is provided along with the Local Planning Scheme documents on the Shire's website and when provided in hard-copy.
- Consult with the State Heritage Office to ensure heritage places within the Shire are afforded adequate protection under the Town Planning Scheme.
- Council to prepare a Local Planning Policy for Heritage Conservation and Development to assist the local government in making decisions under the Scheme about heritage places. The LPP should make reference to State Planning Policy 3.5 Historic Heritage Conservation and include application requirements for heritage listed places such as Heritage Impact Statements, Structural Condition Assessments and Archival Recording and Development Plans in instances of proposed demolitions.
- Consider the referral of Planning and Development applications concerning heritage listed places (TPS and/or MI) to the Heritage Adviser for comment to ensure that Council is informed of heritage impacts in its decision-making process.



Gnowangerup Noongar Centre – a place included on the MHI and the State Register of Heritage Places.

### **3. Shire of Gnowangerup Strategic Community Plan**

The Shire's Strategic Community Plan 2013-2022 has been drafted to guide all activities of the Shire for the current decade. The plan has five overarching goals, of which the third is:

*3. A built environment and infrastructure that supports the community and the economy.*

Five outcomes related to this goal are identified, of which the first is:

*3.1 Appropriate planning and development*

This outcome is supported by four strategies, one of which relates to heritage:

*3.1.4 Support the conservation and maintenance of heritage buildings, heritage items and places of interest.*

Preparation of this Heritage Strategy is an important step towards addressing this strategy. The key performance indicator for the identified outcomes is community satisfaction.

This is the only specific mention of heritage issues in the Strategic Plan. However, other areas may influence heritage, including:

*1.3 A proactive and supportive community*

*3.3 Attractive townscapes and streetscapes*

*3.5.1 Develop and implement long-term Asset Management Plans for all Council assets.*

*4.1 A strong and diversified economic base*

*4.3 A growing tourism industry*

Actions:

- Consider ways that heritage matters relate to other goals, outcomes and strategies within the Shire of Gnowangerup's Strategic Community Plan.
- When reviewing the Strategic Plan, consider including conserving the Shire's heritage as a desired outcome. Consider also including heritage matters as strategies for achieving outcomes more broadly than under the built environment and infrastructure goal.

#### 4. Local Government Municipal Heritage Inventory

The review and update of a Local Government Municipal Heritage Inventory (MHI) is required under Section 45 of the *Heritage of Western Australia Act 1990*, which states:

- (1) A local government shall compile and maintain an inventory of buildings within its district which in its opinion are, or may become, of cultural heritage significance.
- (2) The inventory required by subsection (1) shall be compiled no later than 4 years from the commencement of this Act and shall be –
  - (a) updated annually; and
  - (b) reviewed every 4 years after compilation.
- (3) A local government shall provide the Council with a copy of the inventory compiled pursuant to this section.
- (4) A local government shall ensure that the inventory required by this section is compiled with proper public consultation.

The first Shire of Gnowangerup MHI was adopted by the Shire on 13 March 1996. It was prepared on behalf of the Shire by local resident Patricia Penfold and includes 106 places.

The hard copy of the MHI that was viewed records specific information about the place including the address, building materials and modifications to the place. There is a statement of significance addressing heritage values. Some entries have no photograph and there are no management categories.

The index to the MHI divides the 106 places into the following categories, reflecting themes or sub themes:

- Aboriginal Occupation
- Settlements (including Group, Soldier and Aboriginal after 1829)
- Rail and Light Rail Transport
- Road Transport
- Air Transport
- Mail Services
- Newspapers
- Grazing, Dairying, Pastoralism
- Intellectual Activities, Arts and Crafts
- Commercial and Service Industries
- Hospitality Industries and Tourism
- Government, Local Government and Politics
- Education and Science
- Law and Order
- Community Services and Utilities
- Sport, Recreation and Entertainment
- Religion
- Cultural Activities

- Institutions (Aboriginal, Child Migrant, Paupers)
- World Wars and Other Wars
- Tourism

The Shire's website forwards queries about the content of the MHI to the Heritage Council of WA's online database, InHerit. InHerit appears to show that 108 of the places it lists in the Shire of Gnowangerup are on the existing MHI.

#### 4.1 List of Places on the Municipal Heritage Inventory

InHerit lists the following 108 places on the Shire of Gnowangerup MHI.

InHerit PLACE NUMBER	PLACE	ADDRESS	DATE	TYPE OF PLACE	CONDITION (from InHerit listing)
1089	Gnowangerup Craft House (Fmr Gnowangerup Police Station & Old Gaol)	Aylmore St, Gnowangerup	1918	Police - Shop	Fair
1090	Gnowangerup Agricultural Hall (Gnowangerup Masonic Lodge)	Cnr Aylmore and Whitehead St, Gnowangerup	1910	Agricultural Hall – Masonic Hall	Good
1091	Gnowangerup Hotel	7 Allarydae St, Gnowangerup	1912	Hotel	Fair
1092	Gnowangerup Methodist Church	Crn McDonald and Aylmore St, Gnowangerup	1923	Church	Very good
1094	Memorial Hall	Yougenup Rd, Gnowangerup	1923	District Hall	Good
1095	ANZ Bank	38 Yougenup Rd, Gnowangerup	1915	Bank	Good
1096	Head's Hostel (Jenna House)	48 Yougenup Rd, Gnowangerup	1912	Residence	Fair
1097	Gnowangerup District Hospital	Gnowangerup Broomehill Rd, Gnowangerup	1935	Hospital	Good
1098	Residence (Gnowangerup Hospital, second hospital)	2 Yougenup Rd Gnowangerup	1918	Residence	Good
1099	National Australia Bank	39 Yougenup Rd, Gnowangerup	1913	Bank	Good
1100	The Gnowangerup Star	35 Yougenup Rd, Gnowangerup	1915	Newspaper / Publishing Building	Good
1101	Gnowangerup Post Office	55 Yougenup Rd Gnowangerup			Good
1102	Bank of New South Wales (Gnowangerup Shire Council Officers)	Yougenup Rd, Gnowangerup	1929	Bank	Fair

InHerit PLACE NUMBER	PLACE	ADDRESS	DATE	TYPE OF PLACE	CONDITION (from InHerit listing)
1103	Saint Margaret's Church of England	Yougenup Rd, Gnowangerup	1930	Church	Very good
1104	Borden Agricultural Hall	Magitup Rd, Borden	1928	Agricultural / District Hall	Fair
1105	Mongup	Mongup Rd, Borden	1858 1860	Homestead	Good
1106	Ongerup Railway Barracks (Ongerup Museum)	Eldridge St, Ongerup	1918	Railway	Good
1107	Ongerup Railway Shed	Eldridge St Ongerup	1918	Railway	Poor
1108	Salt River Hall	Chester Pass, South Borden	1925	School / District Hall	Very Poor
2597	Brethren Church Hall	Davies St	1995	Church	
3322	Martinup	1841 Broomehill-Gnowangerup Rd, Broomehill East <i>Clarification of the Shire See notes below</i>	1863	Homestead	Very poor
3417	Telyarup	Gnowangerup Broomehill Rd, Gnowangerup	1910-1918	Homestead	Fair
5069	Nightwell	Nightwell Rd, Borden	-	Natural / Landscape	Fair
5070	Mineral Springs	Kwobrup Rd, Gnowangerup	-	Natural / Landscape	Natural Site-fair
5071	Aboriginal Grave at Nightwell	Nightwell Crossing, Nightwell Rd, Borden	-	Grave	Good
5072	Old Noongar Centre	7 Alymore St, Gnowangerup	1913	Community	Very Poor
5073	JS Roe Plaque (Pioneer Park)	Crn Park and Gnowangerup Broomehill Rds, Gnowangerup	-	Monument	Fair
5074	Lone Pine	Gnowangerup Broomehill Rd, Gnowangerup	1920	Homestead	
5075	House Lot 119 Alymore Street, Gnowangerup	Cnr Alymore and Denny Sts, Gnowangerup	1918	Residence	Fair
5076	James Bell's House	Lot 35 Yougenup Road, Gnowangerup	1910	Residence	Fair
5077	Invermay	72 Yougenup Rd, Gnowangerup	1915	Residence	Good
5078	Gnowangerup Railway Station	Garnett Rd, Gnowangerup	1920	Railway / Museum	Very Poor
5079	Pallinup Siding - site	Pallinup Rd, Gnowangerup	1912	Railway	Site
5080	Formby Siding	Formby South Rd, Gnowangerup	1915	Rail	Fair

InHerit PLACE NUMBER	PLACE	ADDRESS	DATE	TYPE OF PLACE	CONDITION (from InHerit listing)
5081	Kebaringup Siding - site	Gnowangerup/ Ongerup Rd, Kebaringup	1915	Railway	Site
5082	Laurier Siding	Kyarup Property, Gnowangerup	1915	Railway	Very Poor
5083	Toompup Siding	Toompup Rd, Ongerup	1915	Railway	Poor
5084	Beejenup	Wayside Inn Site Crn Pallinup and Beejenup Rds, Gnowangerup	1870	Hotel	Site
5085	Gnowangerup Air Field	Off Strathaven Rd, Gnowangerup	-	Air Field / Transport	Good
5086	Borden Post Office	Borden			Fair
5087	Strathaven	Strathaven Rd, Gnowangerup	1906	Homestead	Very Good
5088	Glenroy (old Glenroy)	Soldiers Rd, Gnowangerup	1922	Homestead	
5089	Glencoe	Soldiers Rd, Gnowangerup	1912	Homestead	Fair
5090	Clear Hills Homestead and Sheering Shed	Clear Hills Rd, Gnowangerup	1880	Homestead	Fair
5091	Glengarry	Glengarry Rd, Gnowangerup	1870	Homestead	Fair
5092	Chirelillup	Formby Crn Gnowangerup	1912	Homestead	Good
5093	Privett	Gnowangerup Broomehill Rd, Gnowangerup	1906	Homestead	Fair
5094	McCathy's Humpy	Jackitup West Rd, Gnowangerup	1900	Cottage	Poor
5095	Pallinup River Stud Farm	Gillespie Rd, Gnowangerup	1880	Shed - Barn	Good
5096	Eugenup Homestead and Original Eugenup (Ruins)	Gnowangerup Broomehill Rd, Gnowangerup	1875-1912	Homestead	Very Poor
5097	Mianelup	Formby South Rd, Gnowangerup	1918	Homestead	Fair
5098	Rockview	Jackitup Rd, Gnowangerup	1921	Homestead	Fair
5099	Magedup	Magitup Rd, Borden	1860	Fmr Police Outstation Stables	Very Poor
6000	Sandalwood	Sandalwood Rd Amelup	1850	Homestead	
6001	Moana Homestead and Woolshed	Chester Pass Rd, Borden	1908 1910	Homestead	Fair
6002	Cassencarry	Ongerup Pingorup Rd, Ongerup	1912	Homestead	Fair

InHerit PLACE NUMBER	PLACE	ADDRESS	DATE	TYPE OF PLACE	CONDITION (from InHerit listing)
6003	Yate Creek	Gnowangerup Ongerup Rd, Ongerup	1929	Homestead	Very Poor
6004	Wyoming (Warperup)	Gnowangerup Ongerup Rd, Ongerup	1895	Homestead	Poor
6005	Bankwest – Ongerup Branch (Eldeidge’s Boarding House)	Eldeidge St, Ongerup	1918	Bank – Boarding House	Good
6006	Caldows Boarding House (GS Hendry & Co)	Yougenup Rd, Gnowangerup	1915	Residence	Fair
6007	Gnowangerup Bakery	Yougenup Rd, Gnowangerup	1915	Bakery	Fair
6008	Frantom Butcher (New Look Hair Salon)	Yougenup Rd, Gnowangerup	1924	Shop	Fair
6009	Gnowangerup Newsagency	Yougenup Rd, Gnowangerup	1920	Shop	Good
6010	Lyric Tea Rooms (Elders)	Yougenup Rd, Gnowangerup	1925	Commercial	Good
6011	Chemist and Smith’s General Store (Gnowangerup Homestitch)	Yougenup Rd, Gnowangerup	1920	Shop	Fair
6012	Lee’s General Store (Olde Shoe shop)	Yougenup Rd, Gnowangerup	1915	Shop	Fair
6013	Ongerup Public Hall and Ongerup Roll of Honor	Eldridge St, Ongerup	1953	District Hall	Good
6014	Nigalup School Site	Pallinup Rd, Gnowangerup	19001 905	School	Site
6015	Gnowangerup District High School	Yougenup Rd, Gnowangerup	1908	School	Good
6016	Glenisla School Site	Close to Borden Rd, Borden	1911	School	Site
6017	Jackitup School Site	Crn Jackitup and Moores Dam Rd, Gnowangerup	1924	School	Site
6018	Willemmenup School Site	Crn Cambellup Toombellup Rd, Gnowangerup	1914	School	Site
6019	East Ongerup School Site	3km East of Ongerup	1914 / 1944	School	Fair
6020	South Kwobrup School Site	Kwobrup	1918	School	Site
6021	Kebaringup School Site	Gnowangerup Borden Rd, Gnowangerup	1921	School	Site
6022	Toompup School Site	Toompup Siding, Toompup	-	School	Site



InHerit PLACE NUMBER	PLACE	ADDRESS	DATE	TYPE OF PLACE	CONDITION (from InHerit listing)
6023	Salt River School Site	Chester Pass Rd, South Borden	1924	School	Very Poor
6024	Borden Primary School	Borden	1925	School	Very Good
6025	Pallinup School Site	Martinup Rd, Gnowangerup	1925	School	Site
6027	Wigboro School Site	19km North of Ongerup	1931	School	Site
6028	South Borden School Site	Six Mile Rd, South Borden	1933	School	Site
6029	Gnowangerup Agricultural School	Hinkley Rd, Gnowangerup	1935	Education	Good
6030	Warperup Crossing School Site	Peerup Rd, Ongerup	1923	School	Fair
6031	Haxby School Site	Borden Bremer Bay Rd, Borden	1936	School	Fair
6032	Ongerup Hall (School Site)	Eldridge St, Ongerup	1927	School	Site
6033	Moortvale School Site	Tie Line Rd, Gnowangerup	1938	School	Site
6034	West Ongerup School Site	Bridgeman Rd, Ongerup	1940	School	Site
6035	Old Gnowangerup Cemetery	Off Tambellup Rd, Gnowangerup	1905	Cemetery	Very Poor
6036	Gnowangerup Cemetery	Strathaven Rd, Gnowangerup	1910	Cemetery	Poor
6037	Gnowangerup First Hospital	Lot 68 McDonald Street Gnowangerup	1914	Hospital	Fair
6038	Aylmore Park Swimming Pool, Gnowangerup	Kwobrup Rd, Gnowangerup	1934	Recreation / Swimming Pool	Fair
6039	Gnowangerup Noongar Centre	Cnr Corbett and Aylmore St, Gnowangerup	1989	Community	Good
6040	Gnowangerup Scout Hall	Cnr McDonald and Cecil Sts, Gnowangerup	1935	Community Hall	Fair
6041	Louis' Lookout	Gnowangerup Ongerup Rd, Borden	-	Community / Lookout	Good
6042	Railway Crane (Ag School Marker)	Gnowangerup Ongerup Rd, Borden	-	Railway	Good
6043	Tractor Park, Gnowangerup	Crn Allardyce St and Yougenup Rd, Gnowangerup	1989	Community Museum	Good
6044	Country Women's Association Hall, Gnowangerup	McDonald St, Gnowangerup	1953	CWA Hall	Good

InHerit PLACE NUMBER	PLACE	ADDRESS	DATE	TYPE OF PLACE	CONDITION (from InHerit listing)
6045	Borden CWA Hall	Moir St, Borden	1945	CWA Hall	Fair
6046	Ongerup CWA Hall (East Ongerup School Room)	Lamont St, Ongerup	1944	CWA Hall	Fair
6047	Borden RSL Memorial Hall	Moir St, Borden	1950	Community Hall	Fair
6048	Gnowangerup War Memorial	Crn Yougenup Rd and Park St, Gnowangerup	-	Monument	Good
6049	Ongerup War Memorial	Eldridge St, Ongerup	-	Monument	Very Good
6050	The Lily (reproduction Dutch windmill)	Chester Pass Rd, Amelup	1993	Tourism	Very Good
6051	Yardup Cottage	Chester Pass Rd, South Borden	1900	Homestead	Good
8779	Parkers School Site	8km East of Ongerup	1931	School	
8780	House	Lot 2 Yougenup Road, Gnowangerup	1915-1920	Residence	Good
25284	Eugenup Homestead	Loc 1675 Gnowangerup Broomehill Rd, Gnowangerup			
25286	Eugenup (Ruins)	Loc 1675 Gnowangerup Broomehill Rd, Gnowangerup			Very Poor

It is noted that the MHI list referenced from the InHerit database does not exactly match the list printed in the Shire's 1996 MHI.

There are entries in the MHI that require clarification. Examples of this clarification include:

- One of the places included on the Shire's MHI (Martinup) is noted in InHerit as being in the Shire of Broomehill-Tambelup.
- A further two places were listed in the original MHI but do not appear to be on the InHerit database. They are:
  - Lot 108 Alymore Springs, Gnowangerup
  - Lot 36 Yougenup Road, Gnowangerup
- It is suspected that there are duplicate entries; such as, Eugenup Homestead that appears in three places on the MHI (P5096, P25284 and P25286).

**Actions:**

- Clarify the list of places currently included on the MHI to remove duplication of entries and to ensure all places are within the Shire of Gnowangerup.
- Initiate a review of the municipal inventory as soon as possible – if an allocation for the review is not currently budgeted then seek a budget allocation for the next financial year.
- Assign a staff member to oversee the day-to-day management of the municipal inventory.
- Establish a MHI scope of work to ensure the municipal inventory review is targeted to achieve maximum outcomes.
- Shire staff to investigate participation in the State Heritage Office's on-line database project "Inherit" for ongoing and future digital management of municipal inventory data.
- Update the municipal inventory annually and/or as information is received.

## 5. Heritage Council of WA database

The Heritage Council of Western Australia maintains a heritage database, 'InHerit'. The database contains information on statutory and non-statutory heritage listings, and the results of heritage surveys and studies.

There are 115 entries on the database for places located in the Shire of Gnowangerup. Most of these are places also included in the MHI, with some groups of MHI places rolled together in the InHerit database to form single places. Places in InHerit but not on the MHI are:

HCWA PLACE NUMBER	PLACE	ADDRESS	DATE	TYPE OF PLACE	CONDITION (from InHerit listing)
4589	Police Outstation (Ruin)	Magitup, Via Borden	-	Police	
4623	Pioneers Houses	Yougenup Rd, Gnowangerup	1910-1915	Residence	Fair to Good
5022	Rabbit Proof Fence No 2 and No 3 (Emu Barrier Fence)	Northampton and Ravensthorpe	1907	Rural Industry	Good - although it varies along the route

<b>14557</b>	Pallingup River Railway Bridge	Tombellup Gnowangerup Railway Gnowangerup	1912	Rail	
<b>15073</b>	Ongerup Uniting Church	Eldridge St, Ongerup	1956	Church	
<b>17436</b>	Ongerup Police Station	Vaux St, Ongerup	1963	Police	Good
<b>17437</b>	Gnowangerup Police Station	Corbett St, Gnowangerup	1965	Police Station	Good

The Rabbit Proof Fence No 2 and No 3 (Emu Barrier Fence) is included in the Shire of Dumbleyung's Municipal Inventory. The Fence is located across 18 different local government authorities of which the Shire of Gnowangerup is one.

Entry in the InHerit database is NOT a 'heritage listing' and place records are indicative only. 'P' numbers are a database reference, meaning 'heritage place number'.

#### Actions:

- During the review of the MHI, consider all places in the Shire that are listed in the InHerit database for possible inclusion in the MHI.
- Request notification from the Heritage Council of WA when places in the Shire are added to InHerit for any reason.

## 6. State Register of Heritage Places

Section 78 of the Heritage of Western Australia Act (1990) requires that all proposed development to a State Registered Place be referred to the Heritage Council of WA for their consideration.

Two places in the Shire are on the Heritage Council of Western Australia's State Register of Heritage Places.

They are:

- P05072 Gnowangerup Noongar Centre (fmr), 7 Aylmore St Gnowangerup
- P03417 Telyarup Homestead, Gnowangerup-Broomehill Rd Gnowangerup

A further Registered place is P03322 Martinup, 1841 Broomehill-Gnowangerup Rd, Broomehill East, which appears to be close to the Shire boundary as it is variously listed as in the Shires of Gnowangerup or Broomehill-Tambellup.

The Inherit database indicates that in February 2010 P01100 Gnowangerup Star Newspaper Office was included on its assessment program. This means that the place will be assessed for its cultural heritage values at some time yet to be determined and potentially added to the State Register of Heritage Places.

InHerit notes that an heritage assessment was completed for St Margaret's Anglican Church, Gnowangerup, in June 2004, and it was determined that the place did not meet the threshold for entry into the State Register of Heritage Places. The database also records that the Ongerup and Gnowangerup Police Stations were examined in September 2012 by the Heritage Council and it was determined that the places do not warrant assessment for further consideration the State Register of Heritage Places.

Actions:

- Shire staff to ensure that any development applications received for State Registered Places are referred to the Heritage Council of WA for comment in accordance with the Heritage of Western Australia Act 1990.



National Australia Bank building – a place included in the MHI.

## 7. Heritage Places Owned by the Shire of Gnowangerup

There are places listed in the MHI that are owned and/or managed by the Shire. These are:

Yvette – Your assistance here please.

The Shire should be seen to follow best practice in conservation of its heritage buildings as well as leading by example in how it manages its heritage assets. To achieve this, the following measures should be addressed:

### **Heritage Listing and Protection**

In the first instance Shire owned heritage places should be clearly identified and assessed through the municipal inventory process, where necessary afforded heritage protection under the Local Planning Scheme and, in cases of very high heritage values, entered in the State Register of Heritage Places.

### **Conservation Management Plans (CPs)**

These very worthwhile documents establish exactly what is significant about a heritage place and how best to conserve that significance. Significant heritage places in Shire ownership should have a Conservation Plan prepared in order to guide the ongoing conservation of the building in a systematic and prioritised manner. These plans need to be kept up to date and therefore existing Conservation Plans should be checked to see if a review is necessary. In some cases a detailed Schedules of Conservation Works and/or a Maintenance Plan may be sufficient.

### **Interpretation**

The interpretation of places in the public domain is an important aspect of helping both the local community and visitors to the Shire achieve a thorough understanding of heritage places and should therefore form part of the strategic heritage aims for the Shire.

### **Resourcing**

Sourcing the necessary funds to adequately maintain, conserve and interpret the Shire's heritage assets needs to be addressed via annual budget allocations and grants programs. Decisions by the Shire about what conservation works to fund, or seek funding for, should be based on detailed and prioritised advice from either a Conservation Plan or a Maintenance Plan, with works supervised by an experienced conservation architect.

Place Name	InHerit P no.	Build date	Condition	Current use	Conservation Plan? (Y/N + date)

Yvette – Are you aware of any places Shire owned with a CMP?

Actions:

- Shire owned heritage places should be afforded the relevant recognition and protection under the Municipal Inventory, the Local Planning Scheme and the State Register of Heritage Places, depending on the level of significance.
- Where necessary, Conservation Management Plans, Schedules of Conservation Works or Maintenance Plans to be prepared for Shire owned heritage places.
- Council to consider ongoing budget allocations for the maintenance and conservation of Shire owned heritage assets.
- Investigate interpretive requirements for Shire owned heritage places through measures such as Interpretation Plans, Heritage Trails and Cross-Regional Trails.
- Source funding to adequately maintain, conserve and interpret the Shire's heritage assets.

## 8. Heritage Incentives

The Shire of Gnowangerup can support and encourage property owners and local community groups to conserve, restore and interpret their heritage places either by continuing to support existing measures, actively implementing current provisions and/or introducing new initiatives.

Examples of ways other Local Governments have provided heritage incentives are available at the Heritage Council's website <http://stateheritage.wa.gov.au/about-us/importance-of-heritage/local-government/creating-incentives-for-owners>.

### Heritage Funding

Existing funding programs are available to assist private property owners and community groups with the documentation, restoration and interpretation of their heritage buildings. By promoting the funding sources and assisting with the application process, the Shire can potentially attract heritage grants to the district which can have a positive on-flow in the wider heritage arena.



### **Variation of Town Planning Scheme Provisions**

The Shire of Gnowangerup Local Planning Scheme No. 2, 2010 (Sections 5.5 and 7.5) contains clauses that allow the variation of provisions of the Scheme where its objective is to ensure the conservation of a heritage place. This provision gives the Shire considerable freedom to negotiate a suitable heritage outcome with property owners. It may benefit not only the property owner but also the local community as a heritage place can be conserved and the development potential of the property realised through collaborative and creative planning.

### **Waiving of Fees for Heritage Listed Places**

Depending on the current fee structure employed by the Shire for planning and building applications, it may be worthwhile for the Shire to consider waiving planning application fees for heritage listed places. In this way the Shire can constructively support landowners with their efforts to conserve and enhance their heritage buildings.

### **Heritage Advisory Service**

The Shire can facilitate the provision of expert conservation advice to property owners through the appointment of a Heritage Advisor. Owners of heritage places included in the Municipal Inventory could be eligible to receive heritage advice on an as-needs basis.

### **Heritage Loan Subsidy Scheme**

Whilst still referenced on many websites, the Heritage Loan Subsidy Scheme is currently being reviewed by the WA Local Government Association (WALGA) and the State Heritage Office. The State Heritage Office is not currently considering any applications under this scheme.

### **Promotion of Grant Funding by Others**

Lotterywest provide a range of Grant Programs covering cultural heritage and interpretation. The Shire can assist by promoting these programs within the Shire.

#### **Actions:**

- Promote heritage grants programs and provide assistance to private property owners and community groups with the application process.
- Support the variation of relevant provisions under the Local Planning Scheme to facilitate the conservation of heritage places.
- Consider options of waiving planning application fees to support conservation of heritage buildings.
- Facilitate the provision of expert heritage advice through the appointment of a Heritage Advisor.



Photo

## 9. Training and Education

The training of Shire staff and Councillors is important in ensuring the ongoing protection, conservation and enhancement of Gnowangerup's heritage places into the future. The Shire can augment its general management of heritage by engaging the services of a Heritage Adviser. Additionally, maximising contact with heritage agencies such as the State Heritage Office and the National Trust of Australia (WA) can have positive benefits in terms of access to expert advice, dissemination of information and management of State Registered heritage places. Establishing partnerships with organisations such as the Western Australian Museum and Rail Heritage WA is also recommended.

### Actions:

- Enable interested Shire staff and Councillors to attend the annual State Heritage Office Heritage Management and Planning Seminar.
- Enlist the services of a Heritage Adviser to provide advice and assistance on a range of heritage issues within the Shire.
- Include 'Heritage' as part of the induction process for elected members. Add a section on heritage to the induction manual.
- Encourage good communication and working relationships with heritage agencies and organisations.

## 10. Community Engagement

Effective management of heritage at the local level relies on an informed and engaged community. To achieve this, local residents should be encouraged to enhance their understanding and appreciation of the district's heritage. There are various ways in which local government can work towards this objective.

The recording of local stories is a way of engaging the community and also developing an understanding of the history and growth of the Shire. The information from oral histories is a valuable resource for use in interpretation initiatives and heritage tourism.

The development of heritage tourism helps to create a strong sense of place and identity. In 2006 a Heritage Tourism Strategy for Western Australia was prepared. The aim of the Strategy is to:

- increase heritage tourism experiences across the State;
- raise awareness of the importance of our heritage; and
- encourage the ongoing conservation of Western Australia's heritage places.

The development of tourism for heritage places maybe linked to projects and initiatives that are part of the broader Great Southern region.

### Actions:

- Investigate the establishment of a collection of heritage resources at the Shire Library inclusive of a collection of reference material, contact details for heritage specialists and trades, contact information for relevant heritage organisations.
- Promote the actions and outcomes in the Heritage Strategy with the Community Resource Centre.
- Consider promotional and educational initiatives such as a regular heritage column in the local newsletter and establishing a heritage section on the Shire's website which could include a link to the Shire's Municipal Inventory.
- Shire staff to consider including copies of the Municipal Inventory and Conservation Management Plans for Shire owned heritage assets on the website in PDF format.
- Investigate and consider a local community oral history program.
- Consider the establishment of heritage trails using digital technology.
- Identify and promote existing and future heritage tourism initiatives that increase the tourism experience within the Shire.

Explore any strategic partnerships to promote heritage places across the wider regional area, especially with regard to cultural tourism.



Gnowangerup Hotel – a place on the MHI.

## 11. Acceptance, Implementation and Review of the Heritage Strategy

The Shire of Gnowangerup Heritage Strategy should be considered and reviewed by Council. Following consideration, Council should receive the strategy and support the implementation of the recommendations.

Sufficient allocation of resources should be directed to the implementation of the Strategy, inclusive of maintaining current allocations for heritage places and projects and making provision for future investment.

The Heritage Strategy should be reviewed on an annual basis in order to monitor progress and ensure that activities are undertaken according to the priorities. Furthermore, the Strategy should be reviewed in full every five (5) years to assess its effectiveness and set new priorities for the future. The review process will help to ensure the Strategy remains a current and effective strategic tool for the Shire to help it protect, conserve and manage its heritage places.

A Progress Report template has been included in Appendix 2 to record when an activity is commenced as well as when an activity has been completed.

## Actions:

- The Shire of Gnowangerup should receive the Heritage Strategy and support the implementation of the recommendations.
- The Heritage Strategy should be reviewed annually to monitor progress. The annual review should be presented to Council for noting.

The Heritage Strategy should be reviewed in full every five(5) years.



Tractor Park – A place on the MHI.

## 12. Priorities and Reporting

The following are considered the most urgent actions arising from this strategy. They are presented in the order that they appear in the report. The numbers that are in the section column relate to the particular section within the document. A full table of all actions and their relative priority is included at Appendix 2 as part of the Progress Report template.

Section	Action
<b>2. Heritage in the Local Planning Scheme</b>	Following a review of the MHI, prepare a Heritage List in accordance with Section 7.1 of the Local Planning Scheme.
<b>4. Local Government Municipal Heritage Inventory</b>	<p>Clarify the list of places currently included on the MHI to remove duplication of entries and to ensure all places are within the Shire of Gnowangerup.</p> <p>Initiate a review of the municipal inventory as soon as possible – if an allocation for the review is not currently budgeted then seek a budget allocation for the next financial year.</p> <p>Assign a staff member to oversee the day-to-day management of the municipal inventory.</p> <p>Establish a MHI scope of work to ensure the municipal inventory review is targeted to achieve maximum outcomes.</p>
<b>5. Heritage Council of WA database</b>	<p>During the review of the MHI, consider all places in the Shire that are listed in the InHerit database for possible inclusion in the MHI.</p> <p>Request notification from the Heritage Council of WA when places in the Shire are added to InHerit for any reason.</p>
<b>6. State Register of Heritage Places</b>	Shire staff to ensure that any development applications received for State Registered Places are referred to the Heritage Council of WA for comment in accordance with the Heritage of Western Australia Act 1990.
<b>7. Heritage Places owned by the Shire of Gnowangerup</b>	Shire owned heritage places should be afforded the relevant recognition and protection under the Municipal Inventory, the Local Planning Scheme and the State Register of Heritage Places, depending on the level of significance.
<b>8. Heritage Incentives</b>	Promote heritage grants programs and provide assistance to private property owners and community groups with the application process.



<b>Section</b>	<b>Action</b>
<b>9. Training and Education</b>	Enlist the services of a Heritage Adviser to provide advice and assistance on a range of heritage issues within the Shire.
<b>10. Community Engagement</b>	Promote the actions and outcomes in the Heritage Strategy with the Community Resource Centre.
<b>11. Acceptance, Implementation and Review of the Heritage Strategy</b>	The Shire of Gnowangerup should receive the Heritage Strategy and support the implementation of the recommendations.



### 13. Heritage Contacts and Support

#### Shire of Gnowangerup

Officer Name Yvette Wheatcroft  
 Position Manager of Operations (infrastructure)  
 Telephone 08 9827 1007  
 Email Yvette.Wheatcroft@gnowangerup.wa.gov.au  
 Website [www.gnowangerup.wa.gov.au](http://www.gnowangerup.wa.gov.au)

Officer Name Stephen Carrick  
 Position Heritage Adviser  
 Telephone  
 Mobile 0457 309 201  
 Email Stephen.carrick09@gmail.com

#### State Heritage Office

Telephone (08) 6552 4000  
 Freecall 1800 524 000  
 Address Bairds Building Address  
 491 Wellington Street  
 Perth  
 Postal PO Box 7479  
 Cloisters Square PO  
 WA 6850  
 Email [info@stateheritage.wa.gov.au](mailto:info@stateheritage.wa.gov.au)  
 Website [www.stateheritage.wa.gov.au](http://www.stateheritage.wa.gov.au)

#### National Trust of Australia (WA)

Telephone (08) 9321 6088  
 Facsimile (08) 324 1571  
 Address The Old Observatory  
 4 Havelock Street  
 West Perth  
 Postal PO Box 1162  
 West Perth  
 WA 6872  
 Email [trust@ntwa.com.au](mailto:trust@ntwa.com.au)  
 Website [www.nationaltrust.org.au](http://www.nationaltrust.org.au)

## Appendix One: Glossary

In any specialist field it is sometimes necessary to use terminology that may not be familiar to some people. In addition, some terms and expressions in common usage are interpreted differently by different people. Therefore, for the sake of consistency and a common understanding, this glossary is provided to clarify the meaning given to the most widely used terms.

**Burra Charter** – This is a document that outlines the main principles and practices that guide the conservation of significant places in Australia. It was prepared by Australia ICOMOS (International Council of Monuments and Sites), and is the widely accepted standard for heritage conservation practice in Australia. Many, but not all, of the terms in this glossary were originally defined in the *Burra Charter*.

**Compatible Use** – A use which involves no change to the culturally significant fabric, changes which are substantially reversible, or changes which require a minimal impact.

**Conservation** – Means all the processes of looking after a place so as to retain its cultural significance. It includes maintenance and may, according to circumstances, include preservation, restoration, reconstruction, adaptation and will commonly be a combination of more than one of these.

**Conservation Management Plan (CMP or conservation plan)** – A document that details how to identify and look after the significant cultural values of a place. Its preparation is a systematic way of considering, recording and monitoring actions and decisions relating to all aspects of managing a place. There are guidelines for the preparation of conservation management plans to ensure that all important matters are considered; refer to James Semple Kerr's *The Conservation Plan* (available as a free download from <http://australia.icomos.org/publications/the-conservation-plan>).

**Cultural Heritage** – Something inherited from the past and valued enough today to leave for future generations. This could include buildings, objects, traditions, stories and so on.

**Cultural Heritage Significance** – Aesthetic, spiritual, historic, scientific or social value for past, present or future generations.

**Heritage Place** – a site, area or building valued for its cultural heritage significance, together with associated contents and surrounds.

**Heritage Act** – The *Heritage of Western Australia Act 1990*, as amended from time to time. It is this Act that requires each local government to prepare a Municipal Heritage Inventory.

**Heritage Assessment** – A systematic assessment that describes a place and its setting and states the significant heritage values of the place based on the criteria outlined in the *Burra Charter*. It is preferable for such assessments to be undertaken by people with relevant experience in this area of expertise.

**Heritage Impact Statement** – A document that evaluates the likely impact of proposed development on the significance of a heritage place and its setting, and any

conservation areas within which it is situated, and outlines measures proposed to mitigate any identified impact.

**Interpretation** - Is 'a means of communicating ideas and feelings which help people enrich their understanding and appreciation of their world, and their role in it' (Interpretation Australia). Effective interpretation allows visitors to gain a greater understanding of a place based upon its significance.

**Management Category** – A designation applied to each place included in the Municipal Heritage Inventory that gives guidance as to how the future of that place should be managed by the owner, developer and/or Council.

**Maintenance** – The continuous protective care of the fabric, contents and setting of the place and is to be distinguished from repair. Repair involves restoration or reconstruction.

**Municipal Heritage Inventory** – A list of places that, in the opinion of the Council, reflect the cultural heritage of the Shire. It could be thought of as a list of the community's heritage assets, and as with any other kind of assets, it is first necessary to know what they are before they can be properly managed. The Municipal Heritage Inventory (MHI) provides no statutory protection; it simply identifies places of heritage significance within the local government area. All or part of the MHI can be included on the local government authority's Heritage List which is incorporated as part of the town planning scheme and ensures statutory protection.

**Precinct** – An area defined by the Town Planning Scheme for planning purposes.

**Preservation** – Maintaining the fabric of the place in its existing state and retarding deterioration.

**Reconstruction** – Returning a place as nearly as possible to a known earlier state by the introduction of materials (old or new).

**Restoration** – Returning the EXISTING fabric to a known earlier state by removing accretions or by reassembling existing components without the introduction of new material.

**Significance** - Means the importance and meaning we place on a landscape, site, building, object, collection or installation in the past, now and in the future. Significance is not absolute. It's about value. Different people value different things at different times in their lives. Values can be personal, family, community, national and/or international. Significance is assessed in terms of:

- historic values
- aesthetic values
- scientific values
- social values
- spiritual values

**Statement of Significance** – A statement that clearly and concisely sets out the significant heritage values of a place, based on the criteria set out in the Burra Charter. Shire

## Appendix Two: Progress Report template

Priorities: **High** – within twelve months; **Medium** – within 2-3 years; **Low** – within 4-5 years; **Ongoing** – to be incorporated into regular staff workload.

Note: Priorities to be agreed with the Shire on each action. The Project Report template includes all the actions within the Heritage Strategy and the specific number in the section column relates to the section within the document.

Section	Action	Priority	Outcome
<b>2. Heritage in the Local Planning Scheme</b>	Following a review of the MHI, prepare a Heritage List in accordance with Section 7.1 of the Local Planning Scheme.		
	Ensure the Heritage List is provided along with the Local Planning Scheme documents on the Shire's website and when provided in hard-copy.		
	Consult with the State Heritage Office to ensure heritage places within the Shire are afforded adequate protection under the Town Planning Scheme.		
	Council to prepare a Local Planning Policy for Heritage Conservation and Development to assist the local government in making decisions under the Scheme about heritage places. The LPP should make reference to State Planning Policy 3.5 Historic Heritage Conservation and include application requirements for heritage listed places such as Heritage Impact Statements, Structural Condition Assessments and Archival Recording and Development Plans in instances of proposed demolitions.		

	Consider the referral of Planning and Development applications concerning heritage listed places (TPS and/or MI) to the Heritage Adviser for comment to ensure that Council is informed of heritage impacts in its decision-making process.		
<b>3. Shire of Gnowangerup Strategic Community Plan</b>	Consider ways that heritage matters relate to other goals, outcomes and strategies within the Shire of Gnowangerup's Strategic Community Plan.		
	When reviewing the Strategic Plan, consider including conserving the Shire's heritage as a desired outcome. Consider also including heritage matters as strategies for achieving outcomes more broadly than under the built environment and infrastructure goal.		
<b>4. Local Government Municipal Heritage Inventory</b>	Clarify the list of places currently included on the MHI to remove duplication of entries and to ensure all places are within the Shire of Gnowangerup.		
	Initiate a review of the municipal inventory as soon as possible – if an allocation for the review is not currently budgeted then seek a budget allocation for the next financial year.		
	Assign a staff member to oversee the day-to-day management of the municipal inventory.		
	Establish a MHI scope of work to ensure the municipal inventory review is targeted to achieve maximum outcomes.		

	Shire staff to investigate participation in the State Heritage Office's on-line database project "Inherit" for ongoing and future digital management of municipal inventory data.		
	Update the municipal inventory annually and/or as information is received.		
<b>5. Heritage Council of WA database</b>	During the review of the MHI, consider all places in the Shire that are listed in the InHerit database for possible inclusion in the MHI.		
	Request notification from the Heritage Council of WA when places in the Shire are added to InHerit for any reason.		
<b>6. State Register of Heritage Places</b>	Shire staff to ensure that any development applications received for State Registered Places are referred to the Heritage Council of WA for comment in accordance with the Heritage of Western Australia Act 1990.		
<b>7. Heritage Places owned by the Shire of Gnowangerup</b>	Shire owned heritage places should be afforded the relevant recognition and protection under the Municipal Inventory, the Local Planning Scheme and the State Register of Heritage Places, depending on the level of significance.		
	Where necessary, Conservation Management Plans, Schedules of Conservation Works or Maintenance Plans to be prepared for Shire owned heritage places.		
	Council to consider ongoing budget allocations for the maintenance and conservation of Shire owned heritage assets.		

	Investigate interpretive requirements for Shire owned heritage places through measures such as Interpretation Plans, Heritage Trails and Cross-Regional Trails.		
	Source funding to adequately maintain, conserve and interpret the Shire's heritage assets.		
<b>8. Heritage Incentives</b>	Promote heritage grants programs and provide assistance to private property owners and community groups with the application process.		
	Support the variation of relevant provisions under the Local Planning Scheme to facilitate the conservation of heritage places.		
	Consider options of waiving planning application fees to support conservation of heritage buildings.		
	Facilitate the provision of expert heritage advice through the appointment of a Heritage Advisor.		
<b>9. Training and Education</b>	Enable interested Shire staff and Councillors to attend the annual State Heritage Office Heritage Management and Planning Seminar.		
	Enlist the services of a Heritage Adviser to provide advice and assistance on a range of heritage issues within the Shire.		
	Investigate the establishment of a collection of heritage resources at the Shire Library inclusive of a collection of reference material, contact details for heritage specialists and trades, contact information for relevant heritage organisations.		
<b>10. Community Engagement</b>	Promote the actions and outcomes in the Heritage Strategy with the Community Resource Centre.		



	Consider promotional and educational initiatives such as a regular heritage column in the local newsletter and establishing a heritage section on the Shire's website which could include a link to the Shire's Municipal Inventory.		
	Shire staff to consider including copies of the Municipal Inventory and Conservation Management Plans for Shire owned heritage assets on the website in PDF format.		
	Investigate and consider a local community oral history program.		
	Consider the establishment of heritage trails using digital technology.		
	Identify and promote existing and future heritage tourism initiatives that increase the tourism experience within the Shire.		
	Explore any strategic partnerships to promote heritage places across the wider regional area, especially with regard to cultural tourism.		
<b>11. Acceptance, Implementation and Review of the Heritage Strategy</b>	The Shire of Gnowangerup should receive the Heritage Strategy and support the implementation of the recommendations.		
	The Heritage Strategy should be reviewed annually to monitor progress. The annual review should be presented to Council for noting.		
	The Heritage Strategy should be reviewed in full every five(5) years.		